

# AXIS 262 Network Video Recorder

*Complete network recording solution*

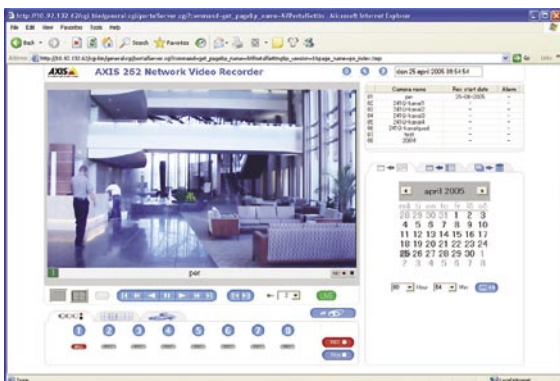
Prevent shoplifting, reduce false alarms, increase personnel safety or view your premises remotely – by using a comprehensive Axis surveillance solution.

The AXIS 262 Network Video Recorder is a complete recording solution which is easy to use and install. It is ideal for storing video with up to megapixel resolution with no quality degradation; it will always give you the same image quality as the original image from the camera or video server. The 160 GB hard disk allows you to store e.g. 10 days of VGA resolution at one frame per second, eight channels. View, record and playback video from up to eight Axis network cameras simultaneously, via remote access. Scheduled and triggered recordings can be performed at a recording speed of up to 240 frames per second.

Connecting directly to your network, the open application protocol interface (API) and sophisticated networking functions based on open industry standards greatly simplify systems integration. Together with Axis network cameras and video servers, the AXIS 262 Network Video Recorder offers the complete surveillance solution.



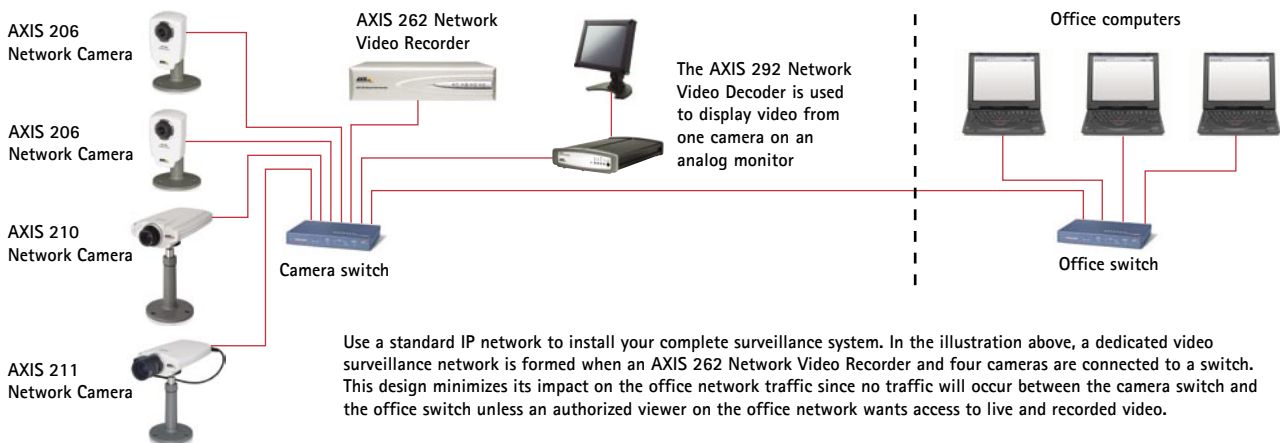
- Records from up to eight network cameras up to megapixel resolution
- Simultaneous recording, live viewing and playback of recorded video
- Easy to install, use and manage
- Records up to 100 frames per second at VGA or 4CIF
- Remote access to recorded material as well as to live cameras
- 160 GB hard disk with Anti-Vibration



# AXIS 262 Network Video Recorder

24873JEN/R2/0505

Specifications	
<b>Video recording</b>	Motion JPEG
<b>Compatibility</b>	Compatible with all Axis network video products running with firmware 4.15 and higher
<b>Recording frame rate</b>	Up to 240 frames per second in QVGA or CIF Up to 100 frames per second in VGA or 4CIF
<b>Recording storage</b>	160 GB hard disk drive with Anti-Vibration
<b>Video channels</b>	8 video channels
<b>Resolution</b>	Up to and exceeding 1280x1024 (always the same as camera's resolution, with no degradation)
<b>Camera live view</b>	All cameras can be monitored through AXIS 262
<b>Live sequence mode</b>	Several configuration options for how the AXIS 262 will sequence through the video sources
<b>Audio Support</b>	Full duplex live audio support through direct connection to audio enabled cameras and servers. No audio recording
<b>PTZ support</b>	Control of all Axis PTZ and dome cameras through direct connection to camera
<b>Alarm recording</b>	Recordings can be started by HTTP notification from a network camera/video server or by a trigger from a digital input on the AXIS 262
<b>Alarm recording frame rate</b>	The frame rate for alarm recordings can be specified independently from the frame rate of scheduled recordings
<b>Scheduled recording</b>	Recordings can be scheduled for the various video sources with different frame rates
<b>Manual recording</b>	Capability to manually start a recording with predefined frame rate
<b>Playback</b>	Playback of recorded material, fast forward, fast reverse, single step forward and reverse
<b>Synchronized playback</b>	Playback of video synchronized in time from up to 4 video sources simultaneously
<b>Search for recordings</b>	Search for recordings based on date and time
<b>Video clip export</b>	Part of a recording can be downloaded to a remote computer
<b>Time synchronization</b>	Date and time in the cameras and video servers are synchronized with the date and time in the AXIS 262. The date and time in the AXIS 262 can be synchronized with an external NTP server
<b>Daylight saving time</b>	Different time zones are supported
<b>System alarm notification</b>	Output 1: Alarm recording status Output 2: Channel lost status Output 3: Hard disk error Output 4: Hard disk full Alarm notification via email if failure on hard disk or system
<b>Security</b>	Multiple user access levels with password protection
<b>Connectors</b>	Ethernet 10BaseT/100BaseTX, RJ-45 Terminal block: 4 alarm inputs, 4 outputs D-Sub for RS-232 port for UPS (Uninterruptible Power Supply)
<b>Processors and memory</b>	CPU: VIA C3 RAM: 256 MB Flash: 128 MB
<b>Power</b>	12 V DC, max 50 W (typically 40 W)
<b>Operating conditions</b>	5 - 40 °C (41 - 104 °F), humidity 20 - 80% RH (non condensing)
<b>Language support</b>	English, German and Japanese (automatic selection)
<b>Installation, management and maintenance</b>	Installation tool on a CD and Web-based configuration Support for firmware upgrades over HTTP; firmware available at <a href="http://www.axis.com">www.axis.com</a>
<b>Video access from Web browser</b>	Full control through the Web browser
<b>Minimum Web browsing requirements</b>	Pentium 4 CPU 2 GHz or higher, or equivalent AMD 512 MB RAM AGP graphic card, Direct Draw, 32 MB RAM Windows XP Pro, DirectX 9.0 or later, Internet Explorer 6.x or later
<b>System integration support</b>	Powerful API for software integration is available at <a href="http://www.axis.com">www.axis.com</a> including HTTP API Embedded operating system: Linux 2.4 The AXIS 262 can be configured to send a TCP notification when an alarm recording starts and stops
<b>Supported protocols</b>	HTTP, TCP, SMTP, DHCP, ARP, DNS, NTP. More information on protocol usage available at <a href="http://www.axis.com">www.axis.com</a>
<b>Included Accessories</b>	Power supply 12 V DC Power cords for Germany, UK and Japan Installation Guide CD with installation tool and User's Manual
<b>Approvals</b>	EMC: EN55022: 1998 Class B, EN61000-3-2, EN61000-3-3, EN61000-4-2, EN61000-4-3, EN61000-4-4, EN61000-4-5, EN61000-4-6, EN61000-4-11, EN 55024:1998, VCCI Safety: EN60950
<b>Dimensions (HxWxD) and weight</b>	70 x 310 x 290 mm (2 3/4" x 12 3/16" x 11 7/16") 5 kg (11 lbs) excl. power supply



AIRLINX Communications, Inc.  
Box 253  
Greenville, NH 03048  
E-mail: [sales@airlinx.com](mailto:sales@airlinx.com)  
Tel: (888) 224-6814  
Fax: (603) 878-0530

**AXIS**  
COMMUNICATIONS  
Make your network smarter